

**CARVED 19TH CENTURY ENGLISH SHIP'S FIGUREHEAD OF A CLASSICAL MALE****\$8,900.00**

ABOUT

Life-size draped classical male ship's figurehead of English 19th century origin. The carving is quite similar to that of the figurehead rescued from the HMS Leander circa 1848 and carved by the Hellyer's of Portsmouth and Cosham. Our figurehead, while exhibiting a quite typical vertical crack, does not exhibit much wood loss. We left it "as found" as to allow the collector his or her own scraping or repainting. Some early pigments remain.

DETAILS

**Dimensions**

Height: 38 in. (96.52 cm)

Width: 17 in. (43.18 cm)

Depth: 14 in. (35.56 cm)

Style: Georgian (Of the Period)  
Materials and Techniques: Carved, Oak  
Place of Origin: England  
Period: 19th Century  
Date of Manufacture: 1840-1860

Condition  
Good

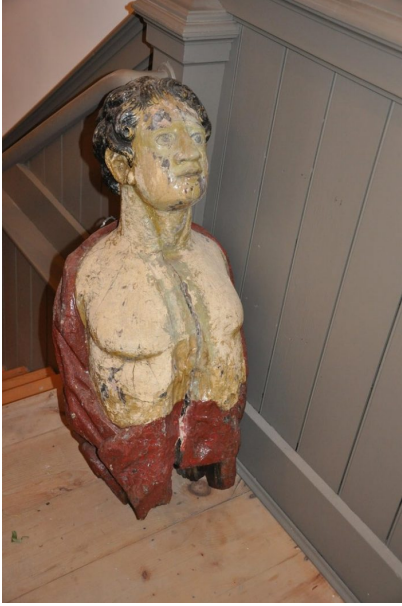
Minor losses. As shown with crack. Discoloration. Really minor wood loss. Face intact. Repaint over time.

Seller Location  
Essex, MA

**SKU:** PL864516437511 | **Categories:** [Art](#), [Sculptures](#) | **Tags:** [Ship's Male](#)

### GALLERY IMAGES





## **ADDITIONAL INFORMATION**



