

LATE 18TH CENTURY WELSH DRESSER OF RETICULATED DETAIL



\$8,900.00

ABOUT

Reticulated George II style late 18th century welsh dresser. Cabriole legs. Upper and original plate rack with candle doors. Base with three drawers. Beautiful piece.

DETAILS

Dimensions

Height: 91 in. (231.14 cm)

Width: 73 in. (185.42 cm)

Depth: 20 in. (50.8 cm)

Style: George II (Of the Period)

Materials and Techniques: Oak

Place of Origin: Wales
Period: Late 18th Century
Date of Manufacture: 1800

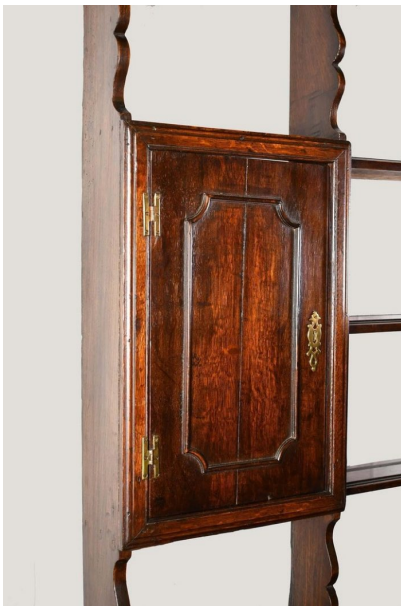
Condition
Good

Wear consistent with age and use. Over waxing. Early finish.

Seller Location
Essex, MA

SKU: PL864520575342 | **Categories:** [Bookcases](#), [Case Pieces](#), [Dressers](#), [Sideboards](#) | **Tags:** [Sideboard](#)

GALLERY IMAGES





ADDITIONAL INFORMATION

